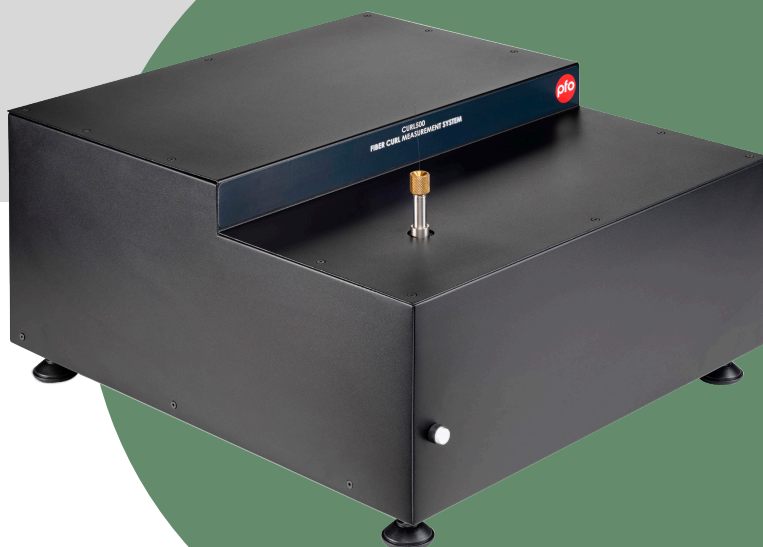
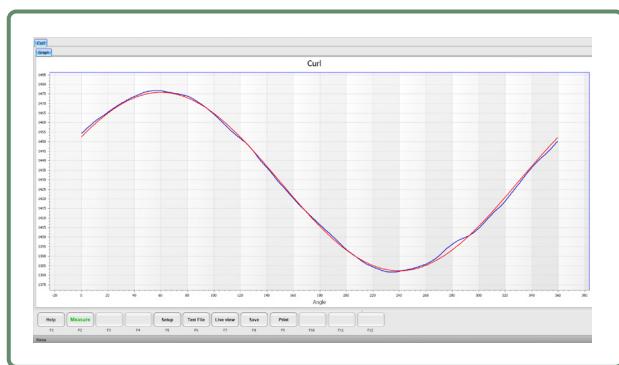




CURL500

FIBER CURL



The CURL500 is a fiber CURL system that measures the natural/relaxed state curl of the fiber. It provides a high-resolution measurement that is consistent in its results, independent of the operator.

FEATURES & BENEFITS

- **Dual beam laser scattering** – Unparalleled stability and accuracy of measurement.
- **Applicable to most fiber types** – Standard, NDS, NZDS, DC, bend-insensitive and multi-mode variant fibers.

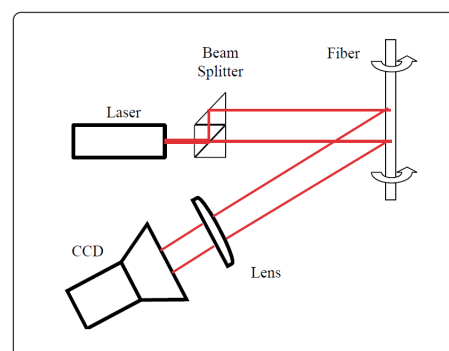
OVERVIEW

The CURL500 is a first choice tool for the QA manager keen to stay on top in the battle to maintain a quality and cost-effective production facility.

The CURL500 uses a dual beam scattering method which is self referencing and removes sensitivity to any mechanical effects unlike the alternative microscope image-based measurements that need a mechanical reference for each measurement point. The CURL500 is designed to produce accurate measurements quickly and with confidence.

STANDARDS

IEC-60793-1-34



PE.fiberoptics Ltd
Rosa House
Mulberry Business Park
Wokingham
Berkshire RG41 2CY
United Kingdom